

Math 1 Reflection Sheet

Name: _____ Date: _____ Week #: _____

Assignments	Grade	Comments

Date	Class work	Homework (must write in planner as well)
Monday		
Tuesday		
Wednesday		
Thursday		
Friday		

******Students must complete their homework daily, 100%; the consequence = silent lunch daily******

Parent Signature: _____

Essential Questions	Answers
1.	
2.	
3.	
4.	
5.	
6.	
7.	
8.	
9.	
10.	

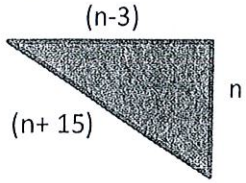
Name: _____ Date: _____ Week: _____

"Warm-up's Q1W9"

8.EE.7

Monday Warm-up

The perimeter of the triangle is 22.7. What is the value of n ?



Show all your work

Tuesday Warm-up

(8.EE.3)

The diagonal of a square is the square root of 2500 centimeters long. What is the length of each side of square?

Show all work here

Wednesday Warm-up

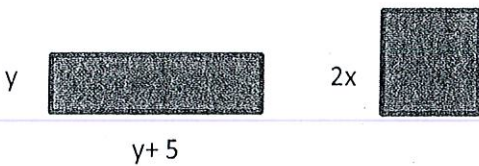
(8.EE.2)

The area of the square is 4,900 ft². What is the perimeter of the square?

Show all work here

Thursday Warm-up

The following rectangle and square have the same perimeter. What is the value of x ?



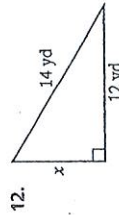
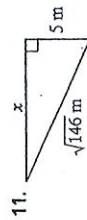
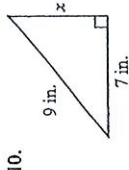
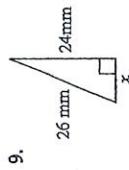
$y+5$

$2x$

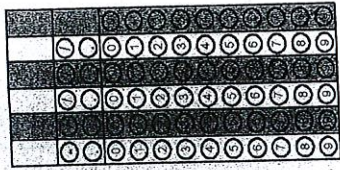
Can you form a right triangle with the three lengths given? Show your work.

- 1. 20, 21, 29
- 2. 7, 11, 12
- 3. $10, 2\sqrt{11}, 12$
- 4. 28, 45, 53
- 5. $9, \sqrt{10}, 10$
- 6. 10, 15, 20

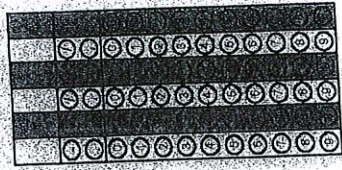
Use the Pythagorean theorem to find the missing side of each right triangle.



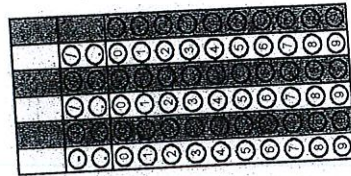
Manuel estimates that during his nine week summer vacation he played video games about two hours a day on weekdays and three hours a day on weekends. Approximately how many hours did Manuel spend playing video games last summer?



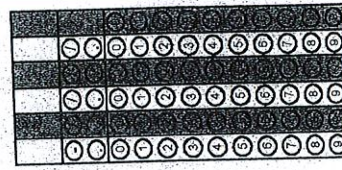
Last week Liz worked 30 hours for \$6.25 per hour. How much money did Liz make working last week?



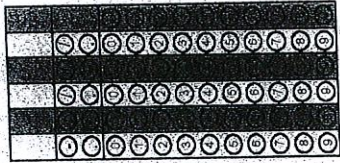
The Tweed's monthly grocery bill has been growing. In January the bill was \$340, in February, \$346, in March, \$354, and in April the bill was \$364. If this pattern continues, what will it be in May?



Maggie told invited friends that they could each bring, at most, three of their friends to her party. Seven friends attended the party, but only four brought guests. At most how many people were at Maggie's party?

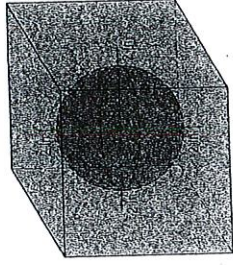


- 1 What is the area of the label on the side of a can of soup if the radius of the can is 2 inches, the height is 4 inches, and the label completely covers the sides?

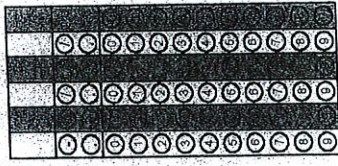


Use the following information to answer Question.

Rhonda was shipping a globe to her cousin in Danbury. The globe has a radius of 6 inches. Rhonda packed the globe in a plastic mold that is a cube and extends 2 inches or more from all surfaces of the globe, as shown in the figure.



What would be the surface area of the box?



Spiral Review

Unit 2, Lesson 1

- ① On the first five quizzes of a marking period, a student has a mean of 6 on a scale of 0 to 10. Find the student's new mean quiz score if, on the next 10-point quiz, the student earned
- a. A score of 10 b. A score of 6 c. A score of 4
- ② International Falls, Minnesota is often the coldest spot in the lower 48 states during the winter season. During one week in January, the low temperatures in Fahrenheit were: -5° , -15° , -20° , -35° , -4° , 6° and 10° .
- a. What was the mean and median low temperature for that week?
- b. What was the range of low temperatures for that week?
- ③ To compare gasoline prices in two neighboring states, students in a *Core-Plus Mathematics* class collected data from 10 service stations in each state. The costs per gallon (in dollars) for regular unleaded gasoline were:
- State 1: 2.879, 2.839, 2.889, 2.919, 2.849, 2.739, 2.829, 2.869, 2.799, 2.859
- State 2: 2.789, 2.769, 2.799, 2.929, 2.859, 2.829, 2.819, 2.789, 3.089, 2.999
- a. What are the mean, median, and range of prices in the sample of stations from each state?
- b. Which state seems to have the lower gasoline prices, and what data summaries best support your conclusion?

Review (Unit 1, Lesson 3)

- ④ Louis weighs 280 pounds and has just joined a weight loss program that guarantees he will lose 10 pounds per month until he reaches his target weight. Write an expression for Louis' weight after m months.